

JANUARY 2017

CHANGE ORDER

CONSTRUCTION SPECIFICATIONS INSTITUTE CHICAGO CHAPTER

Roundtable with a View

Thornton Tomasetti has been a gracious host of both past and upcoming CSI Chicago roundtables this fiscal year. This photograph was taken from their conference room located at 330 N. Wabash Avenue in Chicago after a recent roundtable.

Photo credit: Chris Carpenter, CSI, CCPR, Architectural Representative with Pella EFCO Commercial Solutions

QUICK LINKS

UPCOMING EVENTS

CERTIFICATION

PRESIDENT'S LETTER

SPONSORSHIP OPPORTUNITIES

MEMBER NEWS

CHAPTER NEWS

LEADERSHIP DIRECTORY



773-466-4147

csichicagochapter@gmail.com

<http://chicago.csinet.org>



TABLE OF CONTENTS

PRESIDENT'S LETTER
CERTIFICATION
MEMBER NEWS
 ANNIVERSARIES AND NEW MEMBERS
 MEMBER SPOTLIGHT
 BEYOND THE CHAPTER
CHAPTER NEWS
 EVENT RECAP
HOT TIP OF THE MONTH
SPONSORSHIP AND MARKETING
 UPCOMING OPPORTUNITIES
 PARTNERSHIPS AND MARKETING
INSTITUTE AND REGIONAL NEWS
INDUSTRY EVENTS
LEADERSHIP DIRECTORY
 OFFICERS AND DIRECTORS
 COMMITTEE MEMBERS
CONTRIBUTED ARTICLES
THE CLOSEOUT



Outstanding Chapter Commendation
Chicago Chapter 12 time award recipient

UPCOMING EVENTS

Tile Setting Methods for New Products
Specifier Roundtable: Thursday, January 5, 2017

CDT Exam Study Class
Certification: January - March, 2017

Rapid-Fire Presentations on Technology in Construction
Young Professionals Event: Thursday, January 12, 2017

Disrupting the Building Sciences:
Assessing Building Connectivity through Drone Technology
Industry Roundtable: Friday, January 20, 2017

Delegated Design and How to Make it Work for You
Chapter Program: Tuesday, January 24, 2017

BECx: Building Enclosure Commissioning –
Growing trends toward higher energy performance and operation excellence
Building Enclosure Event: Tuesday, February 28, 2017

CSi2eye - Design and Construct Professional Registration Open
CSi2eye: Thursday, March 16, 2017

Meet the Reps: Single Ply Roofing
Meet the Reps Roundtable: Friday, January 27, 2017, 12-1pm

SAVE THE DATE

Technical Roundtable: Wednesday, January 11, 2017, 12-1pm

President's Letter

January 2017

Happy New Year to you all, and here's hoping you had a very happy holiday season. I'm sure like many of you, at the turn of the new year I think a lot about the year past and the year to come. And I typically put to paper a couple of resolutions in the hopes of focusing myself on goals for the new year. For me, 2016 was a year that saw a lot of change in my life personally and professionally. Due to time constraints, I have not had the chance to actuate a lot of the ideas I had coming into the presidency of CSI Chicago in July. My tenure is now about halfway over, and I want to make sure that I do my best to make positive change in the chapter, in the hopes that I can leave the chapter on a better, stronger footing than when I started - I suppose this is and was the inherent desire for each chapter president and officer going back to the inception of CSI Chicago. So, one of my resolutions for 2017 is to focus more on making those ideas a reality. It will take more time and effort on my part than I was able to commit last year, but I am hopeful that in 2017 I can find the time, energy and gumption to do it. I believe I owe it to an

organization that has given so much to me over the years.

When I first joined, I was focused on a transactional relationship with CSI- I give CSI my dues and CSI gives me a discount on certification testing and some good education opportunities. After a short time, I came to understand that the transaction value I initially sought was not primarily the result of my dues, but rather it was the result of the significant contributions by many dedicated individuals who took time out of their busy schedules to help make CSI work. They organized events, made presentations at chapter programs and roundtables, taught classes online or at conventions and academies, worked on CSI committees for various standards and formats, wrote articles for their chapter newsletters, and so much more.



President's letter continued on the next page...



—
YOUR REPUTATION STANDS ON A NAME

So Does Ours

—

Generation after generation, Marvin Windows and Doors has built our reputation through dedication – the same dedication you build into every home. Together, we share a commitment to design, personal attention and the unparalleled ability to customize. As partners, we both draw from these strengths to build a reputation that can be shared.

**CONTACT YOUR LOCAL, INDEPENDENT DEALER
TO DISCOVER THE MARVIN DIFFERENCE TODAY.**

MARVIN 
Windows and Doors

Built around you.®

© 2016 Marvin® Windows and Doors. All rights reserved. ® Registered trademark of Marvin Windows and Doors.
Builder: Seven Custom Homes, Austin, TX

Chapter Partners

PLATINUM PARTNERS



Built around you.®



GOLD PARTNERS

Cultured Stone® by Boral®



UNION MASONRY CRAFTWORKERS
CONTRACTORS & CONSULTANTS



SILVER PARTNERS

ArchiTech
CONSULTING, INC.



ALLEGION



NORCON
Inc.



RULON INTERNATIONAL



President's Letter (Cont.)

I have come to think of these people, who do more than simply pay their dues in exchange for chapter meetings and dinners, as the “bucket fillers” of CSI. They add value to our organization that we all benefit from. In 2017, I resolve to do my best to “fill the bucket” of the chapter. I hope that you each would similarly look to fill our bucket by volunteering in any way you may have the time, energy and talents to do. If you are looking for an easy way to volunteer, check out our [volunteer spot website](#) to see a listing of upcoming volunteer opportunities. Rather than asking for an ongoing, open-ended commitment to do the same thing over and over, we have tried to make each task a “one-off” to ease the burden of volunteering. Please take a look at the list and contact myself or [Beth Winkler](#) with any questions or comments.

Here's wishing you all a happy and healthy New Year, and I look forward to seeing you at a chapter event soon!

Jeremy Olsen CSI, CCS, CCCA, AIA, LEED AP

Mark R. Nelson
President

Nelson Testing Laboratory
717 Industrial Drive
Elmhurst, IL 60126

Ph.: 630-501-0230
Fax: 630-501-0270

mnelson@nelsontesting.com
www.nelsontesting.com

Häfele America Co.
Chicago Showroom
154 W. Hubbard Street
Chicago, IL 60654
Phone 312 467 2225 x 230
Fax 312 329 0235
Scott.Robery@hafele.us
www.hafele.com

SCOTT ROBERY
Showroom Operations
Manager

Tile Setting Methods for New Products Specifier Roundtable: Thursday, January 5, 2017



Tile Setting Methods for new products – filling the TCNA Handbook gaps (and more!)

More and more new tile and stone products are appearing in the marketplace. Because of this and changes in technology, setting products and grout are quickly evolving and are becoming more difficult to fit into the standards established by the industry. In addition, there are competing standards that are being used to qualify the properties of these products.

Join us as we take an in depth look as to how our specs need to evolve to take into account the recent changes in Division 09.

Moderated by: Randall Chapple AIA, SE, CSI, CCS, LEED AP
Goettsch Partners

Learning Objectives:

- Explore new tile products and how they affect the specifications.
- Review the various standards that are used to specify setting products and grouts.
- Look at some of the cutting edge materials and how to include them into your specifications.
- Share some lessons learned dealing with stone and tile installations.

Time: Noon – 1 PM

Location: Goettsch Partners, 224 South Michigan, Floor 17, Chicago
Or by Webcast on your computer. Log in information e-mailed in advance.

Continuing Education: 1.0 AIA/CES LU



[Click Here to Register](#)

Reservations: Required by January 3, 2017. Limited seating available on a first come basis, with priority given to CSI Chicago members. Non-members requesting to attend in person will be added to a waiting list until members are accommodated. Notification of available non-member in person seating is sent at least two business days in advance.

If your plans change and you cannot honor a reservation, please contact the Chicago chapter so we can offer your seat to someone on the waiting list. Attendance and webcast is complimentary to members and non-members.

Webcast for members/nonmembers is available and instructions will sent 2 days prior to the roundtable. Webcast information will be sent to anyone who is not able to get an in person seat

Email: csichicagochapter@gmail.com or call 773-466-4147

About CSI Specifiers Roundtables: Sessions are held in an informal setting to encourage dialog and attendees are welcome to bring a snack or lunch. Specifier roundtables are a forum for specifiers and architects to discuss specification topics, exchange ideas and share lessons learned. Experienced, as well as new specifiers, are encouraged to attend these small group sessions that require participation and input by attendees.

CDT Exam Study Class
Certification: January 9 - March 20, 2017



Construction Specification Institute's CDT program has provided foundational training in construction processes, roles and responsibilities, and construction documentation for architects, contractors, contract administrators, specifiers, and manufacturers' representatives for decades. This study class will help you prepare for the CDT exam and can also be a good study aid for taking the Architect Registration Exam.

This 11 -week (27 hour) class provides a conceptual understanding of the entire construction process, and concrete skills in construction documentation development and administration, specification writing and enforcement, product research and sourcing, communication with the design and contracting teams. Each class is taught by industry leaders from both the A/E and Product Representative Community. Classes include PowerPoint presentations followed up with quizzes that will help to reinforce the content of the session. The last class includes a practice exam to replicate the CDT exam. Attendees get exposure to industry leaders as teachers that are willing and able to answer questions

Learning Objectives:

- Examine planning and pre-design, sustainability, types of projects and delivery methods
- Summarize CSI format, Project Delivery Guide, methods of specifying, specification language and specification practices
- Review submittals, modifications, warranties, bonds and insurance, post construction, and facility management
- Specify procurement requirements, conditions of the contract, General Requirements, coordinating and interpreting drawings and specifications

Class Dates: January 9 through March 20, 2017 Class meets every Monday night for 11 weeks from 5:30-8:00pm

Location: Norcon, Inc. 661 W Ohio St, Chicago, IL

Continuing Education: 15.0 AIA/CES/HSW for those who attend 9 out of the first 10 classes

Class Fee: \$150 to Chicago and Northern Illinois Chapter members, \$300 for non-members

Practice Guide Material: Material pre-order is now closed. The *Project Delivery Practice Guide* is a recommended study guide for this course and for preparation of your CDT Exam. To purchase this book, log in/create account at <https://portal.csinet.org>, go to "online store" tab and jump to page 9 of the items.

[Click Here to Register](#)

Sponsor a class (details on the next page).

CDT Testing Dates: Late March – April 2017 (Exam cost is additional to course fee)

[More Information on the CDT exam, testing dates and fees >>](#)

Section continued on the next page...

CDT Exam Study Class (cont.)



Study Class Scholarships - *Sponsorship applications closed.*

CDT Scholarships are available to emerging professionals within the following guidelines:

- Interest in the technical development of project documents for the construction industry
- Must be an emerging professional with less than ten years of experience in your field
- Must make a one-year commitment to participating in a CSI committee of your choice
- Not more than one scholarship will be available to employees of a single firm per year

The scholarship will cover the following items:

- CSI Membership fee for one year
- Cost of Chicago Chapter CDT class
- Cost of Project Delivery Practice Guide
- Spring 2017 CDT exam cost will be reimbursed upon passing

You can apply for this scholarship by sending an email to certification.chicago@gmail.com including name, address, company, discipline, years of experience, brief statement explaining why you are interested in becoming a CDT, indication of which committee(s) you would be interested in being a part of.

Sponsor a CDT Exam Study Class - *Sponsorship spots still available!*

- Cost \$150 per class
- One sponsor per class, 10 sponsor spots available, you can sponsor more than one class.
- Speaking opportunity at your sponsored class, recognition with company logo and link to website on CDT section of our website and in monthly newsletter and e-mail blasts, one month business card advertisement in our monthly member newsletter

Questions about the class registration or sponsorship: csichicagochapter@gmail.com or 773-466-4147

Questions about class content or CDT certification please contact: certification.chicago@gmail.com

Thank you to our Class Sponsors:



New Technologies that are Improving our Industry

CSI Rapid-Fire Presentations

Young Professionals Event: January 12, 2017



If you had just over 6 minutes, what would you say??

Have some fun (and some laughs) as you see what our presenters can get out in a short time.

What: This event will feature a series of short presentations by different presenters, centered on a common theme. Presentations are fast, highlighting the best and most relevant or interesting experience of each presenter. While extremely short, having a variety of quick presentations on a common theme keeps the event interesting and a lot of fun!

When: Thursday, January 12th, from 6:00 – 9:00 PM.

Where: Jaks Tap, 901 W Jackson Blvd, Chicago, IL

Cost: FREE! Includes complimentary pizza, beer, wine and soda!

This event is FREE to attend and is open to members and non-members, young professionals and the seasoned professionals who support them.

[Click Here to Register](#)



Looking to support our young professions a little more?

Consider sponsoring this event for just \$100

Sponsorship includes:

- Company recognition with logo on sign at bar and verbal recognition at event
- Company recognition with logo in February newsletter as a sponsor
- Display of product literature, business cards and/or sample at event (11x17" display area footprint)

Sign up to be a sponsor by using the registration link above.



Questions about the event or sponsorship? Contact us at csichicagochapter@gmail.com or 773-466-4147

This event is all about hanging out and having fun, but as an added bonus you will receive 1.0 AIA/CES continuing education credits for attending. Learning Objectives:

- Learn what Chicago design and construction professionals and firms are doing to become more efficient.
- Understand how manufacturers have changed their products to improve their performance.
- Find out what new technologies have improved the way the industry communicates.
- Learn tips on how to properly utilize these technologies to perform better in your job.

Disrupting the Building Sciences:
Assessing Building Connectivity through Drone Technology
Industry Roundtable: Friday, January 20, 2017



The rapid advancement of Drone technology has entered the Building Sciences. Drone technology provides building owners with the ability to remotely sense building envelope connectivity allowing for greater long-term performance. Leading-edge technology carrying advanced high-resolution and thermal cameras provides vantage points unachievable through traditional methods, providing for new, easily acquired and robust facility data. This presentation covers the latest in drone technology, building sciences applications & case studies, safety, privacy and regulatory elements.

Presented by: Michael Cohen, President & CEO, Industrial SkyWorks, Inc.

Learning Objectives:

- Understand the capabilities of today's drones and what challenges still exist.
- Explore possible impacts regarding the health, safety, and efficiency of the built environment.
- Learn how drones are currently used to evaluate building envelopes.
- Discuss the types of data drones can provide to building owners and design professionals.

Time: 12:00pm – 1:00pm

Location: Pella Crafted Luxury, Merchandise Mart, 222 W Merchandise Mart Plaza, Suite 100
(Wells Street Side Entrance)

Continuing Education: 1.0 AIA/CES LU

[Click Here to Register](#)



Reservations: Required by Jan. 17, 2017. Limited seating available on a first come basis.

Complimentary to members and non-members. Non-members requesting to attend will be added to a waiting list until members are accommodated. Notification of available non-member spaces is sent two business days in advance. If your plans change and you cannot honor a reservation, please contact the Chicago chapter so we can offer your seat to someone on the waiting list.

Email: csichicagochapter@gmail.com or call 773-466-4147

About CSI Industry Roundtables: Sessions are held in an informal setting to encourage dialog and attendees are welcome to bring a snack or lunch. Topics are selected that are not product or industry specific and assist in building skills and knowledge to better work within the design and construction community. CSI Product representatives and design professionals are invited to attend. If your plans change and you cannot honor a reservation, please contact the Chicago chapter.

Delegated Design and How to Make it Work for You

Chapter Program: Tuesday, January 24, 2017



“Delegated Design” is a recent industry term that as a topic has received a bit of attention by other professional organizations around the country in the past few years. As the architectural and construction industry changes with increasing complexity of design, innovative non-traditional project delivery and technical advances in construction, the demand for more specialized expertise has grown. In a town-hall setting, a panel consisting of different members of the industry will discuss their viewpoints in defining delegated design and the reasons, roles and responsibilities behind it, and whether you are a specifier, architect, engineer, contractor, or product representative, how delegated design can work for you.

Panelists:

Specifier: Melissa Gibson, AIA, NCARB, CSI, CCCA, LEED AP BD+C | Associate Vice President, Specifier | Epstein Consulting Engineer: Joseph Tinder, S.E., P.E | Regional Manager | Larson Engineering
Manufacturer’s Representative: J.B. Howell, Senior Regional Sales Manager | Novum Structures
Contractor: Rob Falconer or Steve Black | Quality Support Manager | Power Construction

Moderator: Timothy Blatner, CSI, CDT, LEED AP | Principal | FitzGerald Associates Architects

Audience Questions: We will be accepting written questions from the audience throughout the event. There is also opportunity to submit questions with your registration through the link below.



Learning Objectives:

- Identify the various types or levels of design sometimes provided by project constructors, and consider if any trends exist in their utilization.
- Examine provisions in model construction contracts that allow for delegation of design to project constructors, and touch upon the relevant relationships to professional licensing laws.
- Understand where and how delegated design is, and might be, written into project specifications, and what trades and materials might be involved.
- Review roles, responsibilities, and expertise of the various project participants in the incorporation of delegated design into a project.
- Explore potential and historical outcomes, beneficial or otherwise, with respect to original design intent and construction efficiencies.

Continuing Education: 1.0 AIA/CES LU

Time: 5:00 – 5:45 Registration, tabletops, cash bar; 5:45 – 6:30 Dinner; 6:30 – 7:30 Program

Location: East Bank Club, 500 N Kingsbury St, Chicago, IL

Cost: Chicago CSI Members Complimentary, Nonmembers \$45

Registration: Due by January 17, 2017

[Click Here to Register](#)

Marketing Opportunities, parking, and panelist bios on the next page.

Delegated Design and How to Make it Work for You

Chapter Program (Cont.)

Marketing Opportunities:

Tabletops: \$125 CSI Chicago members, \$175 nonmembers.

To reserve your tabletop or for more information please e-mail:

Beth Winkler at csichicagochapter@gmail.com

Parking: There is parking located under the building, Enter the garage at the main entrance to the Club at 500 N. Kingsbury Street, Chicago. Parking fees are \$5.75 for the first four hours, \$0.50 each additional hour with validated ticket.

Meeting Cancellation Policy: Members or nonmembers who are no-shows or cancel after Thursday 5PM are responsible for \$45 fee if the seat cannot be filled.

Panelists:

Melissa Gibson, AIA, NCARB, CSI, CCCA, LEED AP BD+C, is an Associate Vice President and Specification



Writer at Epstein. She has more than 12 years of professional architecture experience as a Project Architect and Specifications Writer for fast-paced local, domestic, and international architecture projects in a broad range of project delivery methods, typologies, scale, and scope. Her responsibilities have included code analysis, architectural detailing and design, construction document development and management, contract administration, existing building assessment, and specification development and management. Melissa joined Epstein in 2013.

Some of Melissa's more recent work includes writing the specifications for the conversion of a vacant office building into the 290-room Conrad Hilton hotel at 101 E. Erie in Chicago, specification development for the prototype design of the LEED-NC Gold Certified Maintenance Facility for the Illinois Tollway in Alsip, Illinois, and specifications for Epstein's Design-Build delivery of a \$264M, 750,000 square foot Pork Processing Facility for Seaboard-Triumph Foods in Sioux City, Iowa.

J.B Howell is Senior Regional Sales Manager for Novum Structures LLC. Howell has over 20 years of experience in bringing innovative glazed solutions for complex, high technology spatial architectural structures, and enclosures. He is responsible for working collaboratively with Architects and General Contractors through all phases of the design and construction process.



Howell received his Bachelor of Science with an emphasis in management from the University of Iowa.

He has been instrumental in development of numerous high profile and highly complex structures in value of over \$150M in the past 10 years including John Hancock Building, Chicago, IL, Indianapolis Convention Center, Indianapolis, IN and General Mitchell International Airport, Milwaukee, WI.

Delegated Design and How to Make it Work for You

Chapter Program (Cont.)

Joseph Tinder, S.E., P.E. is the Regional Manager with Larson Engineering. He has 25 years of experience in the A/E industry in structural and civil engineering. Joe joined Larson in 1994 and has been the Illinois Regional Manager since 2008. He is licensed in 33 states as a Professional Engineer. His knowledge of delegated design comes from the perspective of both the Structural Engineer of Record on large architectural projects and as the Delegated Design Engineer interpreting the requirements of the Prime Professional. His experience as a Delegated Design Engineer includes design of athletic equipment, steel connections, curtain wall, bleachers and more. As Regional Manager, he is also concerned with managing risk while overseeing engineering operations of the regional offices. Joe is an alumni of Marquette University and lives in Wheaton.



Rob Falconer, AIA, has more than 35 years of experience as both an architect and a builder. This combination of perspectives provides him with a broad understanding of design criteria, expectations, and contract documents as well as a clear sense for what it takes to execute both innovative and fundamental design concepts in the field such that they stand the test of time. As a Quality Support Manager with Power, Rob has a special knack for breaking problems into their component parts, identifying the overall process and setting up step-by-step procedures for realizing goals. He is well respected by his colleagues and is commonly sought for his opinion and advice.



Rob's recent experience includes hotels, numerous residential towers, and several high profile institutional projects such as Lurie Children's Hospital, the new ShirleyRyan Ability Lab for RIC, the Loyola University Schreiber Center, and several projects for Northwestern University including the Ryan Center for the Musical Arts and the new Kellogg School of Management on the Evanston campus, and the new Simpson Query Biomedical Research Center in Chicago.

Steve Black brings a unique and valuable perspective to his role as Quality Support Manager. His 25 years in Construction, the last 5 in Chicago, gives him a special knack for breaking problems into their component parts, identifying the overall process and setting up step-by-step procedures for realizing goals. He offers expertise and advice on a wide range of technical areas including enclosure systems, specialty interior finishes, and the challenges associated with using some of the newest LEED materials in an interiors environment.



Steve's recent projects include new Chicago towers, healthcare renovations, adaptive reuse, and new construction in a variety of markets. He was instrumental in the completion of the Marcella Niehoff School of Nursing and Center for Collaborative Learning and the Center for Translational Research and Education – both new LEED Gold buildings on the Maywood campus of Loyola University. His high-rise City projects include The Marquee at Block 37, Arkadia Tower Apartments, and the vertical Elementary School for GEMS Americas. Steve has also been involved in a number of projects in the Fulton Market including the Ace Hotel and the new 900 West office and retail complex.

Meet the Reps: Single Ply Roofing
Meet the Reps Roundtable: Friday, January 27, 2017



This roundtable will give you the opportunity to get to know local representatives and learn about product selection and their applications in the market. Participants are encouraged to come prepared with questions in this open discussion format.

Moderated by: Larry Nordin, AIA, CSI-CCS
Associate Principal, Solomon Cordwell Buenz

Representatives:

Pete Baker – Sika Sarnafil
Peter Grotenhuis – Firestone (SJ Mallein)
Alan Jorzak – Carlisle
Scott Sellers – Fibertite (Seaman Corp)

Learning Objectives:

1. Learn what resources are available to help one learn about the product and make the proper selection.
2. Discuss applicable standards for these products and their application.
3. Share tips, lessons learned, common mistakes in product use/application.
4. Summarize what to look for during installation and share recommended installers.

Time: 12:00-1:00pm

Location: Klein and Hoffman, 150 S Wacker Dr # 1900, Chicago

Continuing Education: 1.0 AIA/CES LU



[Click Here to Register](#)

Reservations: Required by January 25, 2017. Limited seating available on a first come basis. Complimentary to members and non-members. Non-members requesting to attend will be added to a waiting list until members are accommodated. Notification of available non-member spaces is sent two business days in advance.

If your plans change and you cannot honor a reservation, please contact the Chicago chapter so we can offer your seat to someone on the waiting list.

Contact: E-mail csichicagochapter@gmail.com or call 773-466-4147

About CSI Roundtables: Sessions are held in an informal setting to encourage dialog and attendees are welcome to bring a snack or lunch.

Building Enclosure Commissioning
14th Annual Building Enclosure Event: February 28, 2017

**BECx: Building Enclosure Commissioning –
Growing trends toward higher energy performance
and operation excellence**

Presented by: John Runkle, P.E.
Vice President - Building Science Solutions
Interek - Architectural Testing, Inc.

Today's industry demands faster construction with better and cheaper buildings, making BECx more vital in achieving high performance. Understand how BECx enhances project performance and the application of building enclosure-related testing, from laboratory to field, as Mr. Runkle discusses the pertinent codes and standards, building science concepts and current material science which serve as a foundation to this new practice area.

[Learn more about this event and see the learning objectives >>>](#)

Date: February 28, 2017

Location: Maggiano's, 516 N Clark St, Chicago, IL 60654

Continuing Education Units: 2.0 AIA/CES/HSW LU

Morning Session*:

7:15-7:45-Registration/breakfast buffet

7:45-10:30am-Program

Lunchtime Session*:

11:15-Registration

11:45am-12:15pm-Lunch

12:15-3:00pm-Program

Cost for one session:

Members and Industry Partners \$40

Non-members \$48

*Breakfast and lunch sessions will be similar presentations.

[**Register for Breakfast Session**](#)

[**Register for Lunch Session**](#)

Presented by:



*Building Knowledge
Improving Project Delivery
Chicago Chapter - Founded 1953*

- For 13 years, this event has featured expert national and international Building Enclosure industry practitioners and researchers.
- Architects, contractors, engineers, manufacturer representatives, owners, project managers, specification writers, and other design and construction professionals will benefit from the technical knowledge presented.
- Take advantage of this high level presentation to earn continuing education credits.
- Register early to assure your attendance as this event is expected to fill to capacity.

Event Sponsors:

DuPont™
Tyvek®

distributed by **Parksite**

ROXUL®
The Better Insulation™

 **Oldcastle**
BuildingEnvelope®



Building Enclosure Commissioning Building Enclosure Event: February 28, 2017



About the speaker: John Runkle is the Vice President of Building Sciences Solutions for Architectural Testing, Inc., an Intertek company. He manages offices throughout North America and staff in the Middle East and China. Mr. Runkle has worked on new construction and retrofit projects for commercial, industrial and residential structures in most of the 50 states and several countries.

John serves as the Building Commissioning Association's liaison to ASTM and has served as Vice President of the National Capitol Chapter for many years. He actively participates in the BCA and is presenter several times a year. He is a graduate of the Pennsylvania State University with a degree in Civil Engineering and is a licensed professional engineer in multiple states.



John brings over 15 years of experience as a building enclosure consultant and enclosure commissioning provider and has been integral in the development of the practice area of building enclosure commissioning both domestically and internationally. His areas of expertise include roofing, claddings, fenestration and below grade waterproofing.

In his role at Intertek-ATI John manages the commissioning and consulting activities for multiple disciplines including building enclosure, fire protection and life safety, security, technology, structured cabling, acoustics and audio-visual systems.

Industry Promotional Partners:

AIA CHICAGO



AIA Northeast Illinois
A Chapter of The American Institute of Architects



CAC BUILDING ENVELOPE FOUNDATION
A NOT-FOR-PROFIT 501 (C)(3) ILLINOIS CORPORATION
309 East Rand Road, Suite 342, Arlington Heights, IL 60004
www.cac-bef.org



CSi2eye: One-on-One Technical Education Event
Design and Construction Professional Attendance
Thursday, March 16, 2017



CSi2eye returns for a 4th year as design and construction professionals and manufacturers will come together for the day to exchange technical knowledge and ideas.

What is CSi2eye?

CSI Chicago Chapter's high-level technical education event. Senior representatives from top design & construction firms are brought together with product representatives for a day of education and exchange of technical knowledge. Through pre-arranged eye-to-eye 20 minute scheduled meetings, CSI provides the platform for decision makers to meet with technical experts from a variety of manufacturers.

Who should attend this event?

Design and construction professionals that are committed to continual learning and staying up to date on products, applications, and resources available today. Attendees on the design and construction side include architects, specifiers, contractors, project managers, consultants, owner's representatives, etc., who have responsibility for selecting and specifying materials and systems for their firms. CSI membership is not required for this event.

By participating in this event, you will:

- Meet, without interruption or schedule changes, with many suppliers throughout the day to discuss the technical aspects of the products/services that are offered.
- Meet with higher level supplier/manufacturer representatives with technical product knowledge, often beyond that provided by your local representative.
- Learn about new and innovative products, systems or capabilities currently on or coming to the market.
- Expand your contact base with reliable and knowledgeable representatives who can answer your questions when they come up on your projects.
- Receive an event booklet with attendee and company information to serve as a future contact reference.
- Listen to a keynote speaker at lunch for 1.0 AIA/CES LU (Speaker details to be announced soon).
- Have a chance to win one of two \$500 Visa gift cards (one drawing in the morning and one in the afternoon).
- Enjoy complimentary breakfast, lunch, snacks and drinks, including our post-event cocktail reception.

Location: East Bank Club, 500 North Kingsbury Street, Chicago

Schedule:

8:00am - 8:45am	Breakfast and Registration
8:45am - 11:45am	Morning Sessions with coffee break
11:45am - 1:30pm	Lunch with 1.0 CEU Presentation
1:30pm - 4:30pm	Afternoon Sessions with beverage break
4:30pm - 5:15pm	Cocktail/Appetizer Reception

Cost: No cost to you. This event is complimentary for Design and Construction Professionals

[Design and Construction Professionals Register Now for CSi2eye 2017 >>>](#)

Registration will be open until February 10, 2017 or until spots are full. CSI membership is not required.

Meeting Attendance/Schedules: During registration, you have the option of attending full day, morning, or afternoon. Prior to the event, you will be given a meeting match up survey where you will have an opportunity to rank your interest in the attending manufacturers. Meeting match-ups will be made based on the survey results.

Representatives per Firm: We try to limit attendance to a maximum of 2 representatives per firm. If a firm would like to send more than two representatives, please contact us about putting additional people on the waitlist.

Cancellations: If you need to cancel or change your attendance at the event after February 10, 2017, we ask that you send an alternate representative to attend in your place.

Please contact Chicago CSI with any questions at: csichicagochapter@gmail.com or 773-466-4147

Member News

Anniversaries and New Members

Continuous years with CSI...

- 31 Kenneth Lies, CSI**
Raths, Raths & Johnson, Inc.
- 26 Thomas Kuhn, CSI, CDT**
Carras-Szany-Kuhn & Assoc., P.C. Architects
- 25 Mari Ciastko, CSI**
SkyFold
- 24 Mark Nelson, Esq., CSI, CDT, ALA**
Nelson Testing Laboratories
- 19 Joe Pullara, BS, CSI, CDT, AIA, LEED AP**
FGM Architects - Planners
- 18 John Maurin, CSI**
Kewaunee Scientific Corp.
- 18 Douglas First, CSI, CCCA, RRO**
Douglas T. First, CCCA, RRO
- 18 Richard Master, CSI, AIA, ALA, LEED AP**
Home
- 15 Greg Cook, CSI, CDT**
Holabird & Root, LLC
- 15 Linda Zigman, CSI**
- 14 Michael De Rouin, CSI, CCCA, AIA**
Fitzgerald Associate Architects
- 13 Lance Parker, CSI**
Thornton Tomasetti, Inc.
- 11 Michael Johnson, CSI**
NSG Group
- 8 Tom Safran, CSI**
Tee Jay Service Company
- 8 Mark Spann, CSI, CCCA, FALA, LEED AP**
- 7 Peter Grotenhuis, CSI, CDT**
SJ Mallein Company
- 7 Tyler Barton, CSI**
MAPEI Corporation
- 6 Dianne Carey, BS, CSI, CDT, AIA, USGBC**
W. R. MEADOWS, Inc.
- 5 Andrea Baird, PE, RA, CSI, CCCA, AIA, LEED AP, NCARB**
Raths, Raths & Johnson, Inc.
- 5 Chad Hanley, CSI, CDT, LEED AP**
Booth Hansen, Ltd.
- 5 Brian Pigney, CSI, AIA, LEED GA**
- 5 Rafael Rivero, CSI, LEED GA**
CPI Daylighting
- 4 Alfred Schaffer, CSI, CDT**
Euro-Masterworks, Inc.
- 4 Laura Flores, CSI, CDT, B. Arch, LEED AP**
Epstein
- 4 William Radford, CSI, CDT, LEED AP, MRAIC**
Jensen & Halstead Ltd.
- 4 Greg Brown, CSI, CCCA, LEED AP, PMP**
The Concord Group
- 4 Delph Gustitus, CSI, AIA, EIT, LEED AP**
Gustitus Group, Inc.
- 3 Gail Ann J Goldstead, CSI, CCS, AIA, LEED AP**
Adrian Smith + Gordon Gill Architecture LLP
- 3 Robert Lentz, CSI, CDT**
Stonhard
- 3 Mildred Acevedo, CSI-S**
Best Imaging Solutions
- 3 Rebecca Booth, CSI-EP, CDT**
Raths, Raths & Johnson, Inc.
- 3 Thomas Gliniecki, CSI**
Hufcor, Inc.
- 2 Peter Babaian, CSI**
Simpson Gumpertz & Heger Inc.
- 2 Brian Lewis, CSI-EP**
- 2 Kathleen McGinley, CSI**
Mapei Corporation
- 2 Patrick Mooney, CSI, LEED GA**
SWF Contract
- 2 Matthew Holop, BS, CSI**
- 1 Saydarasak Phonexayphova, CSI, CDT, LEED AP, NCARB**
Fitzgerald Associates Architects
- 1 Linda Considine, CSI**
Boon Edam
- 1 Amanda Newberry, CSI**
- 1 Thomas Flynn, CSI, CDT**
Klein and Hoffman
- 1 Jeffery Valentine, CSI**
- 1 Nick Mazzocco, CSI**
Nabco Entrances
- 1 Kyle Evans, CSI, CDT**

Welcome New Members...

- Jonathan Cobb, CSI**
- Heather O'Hara, BBA, MS, CSI, CFM**
- William Shuta, CSI**
Tremco, Inc.
- Tristan d'Estree, CSI**
Formsolver
- Mark Jirik, CSI, ASLA, LEED AP, RLA**
- Guadalupe Casimiro, CSI**
- Dennis Milam, CSI**
Skidmore, Owings & Merrill LLP

Member Spotlight

Charles Arko, CSI, CDT, AIA, LEED AP

By: Elias Saltz, CSI, CCS, LEED AP



Charles Arko joined CSI this year as part of the chapter's CDT Scholarship program. He's a project architect at Solomon Cordwell Buenz in Chicago where he works on all phases of the firm's high-rise housing and office projects. His educational background is in architecture; he received an undergraduate degree in art with a focus on architecture from Miami University in Ohio, and his masters of Architecture from the University of Illinois at Chicago. During graduate school, Charles spent a semester in Barcelona, at the Institute for Advanced Architecture of Catalonia (IAAC) for a semester.

Originally from Cleveland, Charles has lived and worked in Chicago for about a dozen years. He resides

in Lakeview, uncomfortably close to Wrigley Field, which he finds to be an exciting place, but a little overwhelming this past season. Despite Cleveland origins, he was rooting for the Cubs this year. Outside of practice, he enjoys architecture – he is a docent for the Chicago Architecture Foundation, as well as a mentor for their teen architecture programs. His other activities include cycling, soccer, and (sometimes) cooking.

Professionally, Charles has avoided becoming too focused on one area of practice; instead he's tried to pursue the next concept or idea he finds exciting. He says, "Design is extremely important to me - I think the one constant in my work is to constantly push and evaluate the design, no matter the project type or phase (sometimes a little tricky during construction, of course)." He enjoys working on design visualization and is interested in how new technologies can improve the way designs are communicated with clients and the public.

Charles joined CSI initially to continue his education - with the goal of earning a CDT after obtaining his architecture license. Since then, he has gotten involved in planning events for the Chicago chapter. He has found that the CSI community is a tight-knit one, with a lot of collaboration and shared knowledge. He looks forward to continuing to meet people and expanding his knowledge base.

[Sign up to write a member spotlight >>>](#)

The name that built an industry™

Cultured Stone® by Boral®

Sculpt the modern landscape.

With an eye on strong, contemporary designs that elevate trends and create demand, the Contemporary Collection from Cultured Stone® by Boral® serves as the zenith of the modern landscape. And with new additions, including Pro-Fit® Modera™ LedgeStone and Hewn Stone™, this latest extension allows you to create new, inventive designs that exceed your past limits. Keep pushing the boundaries of contemporary architecture and design with the entire Contemporary Collection, only from Cultured Stone® by Boral®.

Holly Hirsch
holly.hirsch@boral.com | 224.250.0317



PELLAEFCOSOLUTIONS.COM

CHRIS CARPENTER, CSI, CCPR

ARCHITECTURAL REPRESENTATIVE

27545 Diehl Road, Suite 100 • Warrenville, IL 60555

Phone: 630.675.4750

ccarpenter@pella.com



COMMERCIAL
SOLUTIONS

Beyond the Chapter

Chicago CSI Members activities beyond Chicago Chapter

The following is a list of members of the Chicago Chapter of the Construction Specifications Institute that are volunteering for construction industry activities beyond the Chicago Chapter of CSI.

I hope to receive information regularly to expand this list and keep it current so that we can all be informed as to the breadth of member activities. Please send your construction industry volunteer activity information to me at:

jstypka@jahn-us.com

Thank you,
Joe Stypka

Member	Activities Beyond
Andrea Baird	Chicago CSI's representative judge for the Future Cities Competition 2017
Randy Chapple	Construction Specifications Institute Delegate to the Tile Council of North America (TCNA) Handbook Committee and to the ANSI A108 Accredited Standards Committee for Ceramic Tile Member of the U.S. Technical Advisory Group to ISO Technical Committee 189 on Ceramic Tile Committee member of ASTM E2751/E2751M "Design and Performance of Supported Laminated Glass Walkways"
Scott Conwell	International Masonry Institute (IMI) Delegate to the Tile Council of North America (TCNA) Handbook Committee and to the ANSI A108 Accredited Standards Committee for Ceramic Tile Member of the U.S. Technical Advisory Group to ISO Technical Committee 189 on Ceramic Tile
Jeff Diqui	Building Enclosure Council – Chicago chapter, Program Director Air Barrier Association of America (ABAA) Terminations and Flashings Committee
Renee Doktorczyk	Member of North Central Region, Institute Director Nominating Committee
Peter Grotenhuis	Chicago CSI's representative judge for the Future Cities Competition 2017
Frank Heitzman	Construction Specifications Institute, UDS Program Task Team
Alan Itzkowitz	Construction Specifications Institute, Certification Strategic Group Northern Illinois Chapter CSI, Vice President
Robert Moretti	Chicago CSI's representative judge for the Future Cities Competition 2017
Elias Saltz	Construction Specifications Institute, Practice Area Curriculum Committee CSI North Central Region Electronic Communications Chair
Joe Stypka	National Institute for Building Sciences (NIBS), UDS Modules Task Team for the National CAD Standard (NCS) American Institute of Architecture (AIA) MasterSpec Architectural Review Committee American Architectural Manufacturers Association (AAMA) AMC Finishes Committee Member

MARVIN
Windows and Doors
Built around you.®

Integrity
from MARVIN
Windows and Doors
Built to perform.®

Taylor Neill
Architectural Project Manager -
Chicago
401 State Ave. N.
P.O. Box 100
Warroad, MN 56763

Cell: 312-833-1719
Toll Free: 800-834-7497
Fax: 218-386-4216
e-mail: taylorneill@marvin.com
www.marvin.com

Chapter News

CSI Chicago Supports Future City Regional Competition

The [Future City Competition](#) is a national, project-based learning experience where students in 6th, 7th, and 8th grade imagine, design, and build cities of the future. Students work as a team with an educator and engineer mentor to plan cities using SimCity™ software; research and write solutions to an engineering problem and present their ideas before judges at Regional Competitions on January 7, 2017. Regional winners represent their region at the National Finals in Washington, DC in February.

CSI Chicago Chapter will once again sponsor a competition award this year and send judges to the Chicago regional competition. The award is titled Best Use of Construction Materials with a criteria of specifying materials that contribute to a sustainable environment, most innovative use of building materials and model construction using environment-friendly materials.

Thank you to Kurt Moehlmann, CSI, CDT of RPI, Inc. for sponsoring this award for the chapter again this year!

Thank you to our judges for donating their time to participate in this competition:

Peter W. Grotenhuis, CSI, CDT

Robert Moretti, MBA, CSI, CDT

Andrea Baird, CSI, CCCA, AIA, P.E., LEED AP

Chapter news continued on the next page...

We're more than just a paint company

- Extensive National Architectural Program
- Product and Environmental Certifications



Master
Painters
Institute

BEHR
behr.com/architect

Chapter News (Cont.)

Small Ways to Help the Chapter

Give the chapter 1-2 hours of your time by contributing an article for our newsletter or signing up to help out at an event (you are coming already anyways!).

These are upcoming tasks that have openings still for the first part of 2017:

- January 24, 2017 - Door Greeter for chapter program
- February "Closeout" Feature Project for March *Change Order*
- February Member Spotlight for March *Change Order*
- February Hot Tip of the Month for March *Change Order* (no hot tip presentation in February)
- February 28, 2017 - Door Greeter for Building Enclosure Breakfast or Lunch Program
- February 28, 2017 - Photographer for Building Enclosure Breakfast Program
- February 28, 2017 - Event recap article for *Change Order*

To sign up for one of these, read more about the tasks, or see what is open for 2017 click this link to see our sign up on SignUp.com: <http://signup.com/go/V256ZU>

If you have any questions about the expectations of the various tasks, contact:

Beth Winkler csichicagochapter@gmail.com



Because your reputation is on the line every day.

We make DuPont™ Tyvek® CommercialWrap® for professionals who build quality into every job. After all, it's architects and contractors like you who have made us the industry leader for over 25 years. And you're why we continue to develop innovative products, systems and services for the commercial market, like the 10-Year Limited Warranty that gives added peace of mind with every job and the DuPont™ Tyvek® Specialist Network that supports you on and off the site. DuPont™ Tyvek® Weather Barrier Systems—they're all about building a better and even stronger reputation.

For more information contact:

Matthew Reed

Market Development Manager

Senior Certified DuPont Tyvek Commercial Specialist

(630) 788-0969



Tyvek®

DuPont™ Tyvek®: CommercialWrap® • Wrap Caps • Tape | DuPont™: FlexWrap™ • StraightFlash™ • StraightFlash™ VF • Fluid Applied WB

© 2016 DuPont. All rights reserved. The DuPont Oval logo, DuPont™, Tyvek®, Tyvek® CommercialWrap®, FlexWrap®, StraightFlash® and StraightFlash™ VF are registered trademarks or trademarks of E.I. du Pont de Nemours and Company or its affiliates.

16-0130



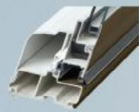
COMMERCIAL
SOLUTIONS

TWO
INDUSTRY
LEADERS.

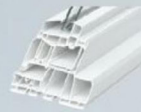
ONE LOCAL
SOURCE.



ALUMINUM



FIBERGLASS



VINYL



WOOD

WINDOWS • BALCONY DOORS • STOREFRONTS • ENTRANCES • CURTAIN WALLS
SUN CONTROL • IMPACT, BLAST AND BALLISTIC OPTIONS • THERMAL PERFORMANCE

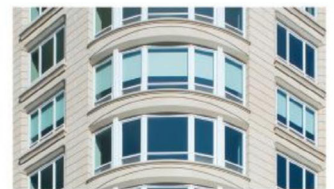
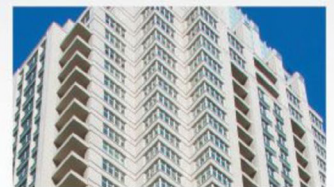
Articulate your vision with four materials, virtually endless styles and options, and a wide range of price points with Pella EFCO Commercial Solutions. Pella and EFCO – two of the strongest fenestration brands in the industry – are working together to better support you in realizing your design intentions.

Contact your local team:

Chris Carpenter, CSI, CCPR | Architectural Representative
ccarpenter@pella.com | 630-257-1465 | PellaEFCOSolutions.com



© 2016 Pella Corporation



Event Recap

Holiday Party and Benefit - December 8, 2016

By: Taylor Neill, CSI

On the evening of Thursday, December 8th, CSI Chicago chapter held its annual Holiday Party at Labriola Ristorante & Café. Proceeds benefited the Greater Chicago Food Depository, which provides food for hungry people while striving to end hunger in our community.

A special thanks to the event sponsors: **Bill Zientarski of SaftiFIRST, Lance Krall of Sika Corporation, and Jonathan Cobb of Kingspan Insulation, LLC.** We would also like to thank the following donors for contributing raffle prizes and/or donating money to the Greater Chicago Food Depository:



Donor	Company
Patrick Duffy	Advanced Building Products
Laura Gagliano	Allegion plc
Dewain Peterson	ASSA ABLOY
John Meany	Behr Paint
Michael Sreckov	Bohle America, Inc.
Diane Petfalski	Construction Specialties
Jeff Tolle	Crane Composites
Holly Hirsh	Cultured Stone® by Boral®
Melissa Gibson	Epstein
Alfred Schaffer	Euro-Masterworks, Inc.
Timothy Blatner	FitzGerald Associates Architects
Noi Phonexayphova	FitzGerald Associates Architects
Kim Shaw	GCP, formerly W R Grace
Elaine Szot	Hilti
Chris Walsh	Inpro Corp.
MattNordloh	Integrating Products
	Labriola Ristorante & Café
Kathleen McGinley	Mapei Corporation
Taylor Neil	Marvin Windows & Doors
Kristin Henriksen	Mechosystems
Chris Carpenter	Pella EFCO Commercial Solutions
Karen Swank	Poggenpohl
Ken Lies	Raths, Raths & Johnson, Inc.
Heather Rice	Schönox HPS
Bob Moretti	Tremco Roofing
Kurt Wensel	YKK-AP AMERICA
Cathy Beazley	



The support was generous and the final donation amount will be listed in the February newsletter. Raffle ticket prizes ranged from gift cards to bottles of wine to two tickets to a Chicago Blackhawks game! Jeff

Article continued on the next page...

Event Recap Chapter Program (Cont.)

Tolle and his booming voice helped by again being this year's spokesperson and announcing raffle ticket winners. Lastly, we would like to thank Labriola who hosted the event and were very accommodating with budget, timing, layout and menu items.

Turnout was great with 60 members and guests in attendance. The food and drinks were enjoyable and the service was excellent. A combination of tables, booth and high-tops allowed people to eat and mingle. There were many compliments given to the food and dessert.

A huge thanks goes out, not only to our sponsors and donors, but to the social committee for coordinating this event and to all those who attended and those who purchased raffle tickets. All of these things helped greatly contribute to the money raised for the [Greater Chicago Food Depository](#).



GREATER
CHICAGO
FOOD
DEPOSITORY



Check out our [Facebook page](#) for more event photos.

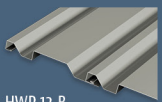
[Sign up to write an event recap >>>](#)

Bold Visual Effects

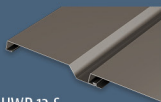


NEW Precision Series wall panels create dramatic shadow lines

Precision Series wall panels provide design flexibility with easy, cost-effective, horizontal or vertical installation. The original Precision Series HWP profile features a 7/8" depth, while the Precision Series Highline profiles are 1-3/8" deep to add visual intensity to a building's exterior. Panels are now available in 8 rib patterns and 33 ENERGY STAR® colors.



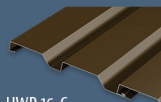
HWP 12-B
WITH OR WITHOUT CLIP



HWP 12-S
WITH OR WITHOUT CLIP



HWP 16-B
WITH OR WITHOUT CLIP



HWP 16-C
WITH OR WITHOUT CLIP



HWPC
BERKSHIRE BLUE - ENERGY STAR

PAC-CLAD.COM
MD: 1 800 344 1400
GA: 1 800 272 4482

IL: 1 800 PAC CLAD
TX: 1 800 441 8661
MN: 1 877 571 20

[PACGREENINFO.COM](#)
YOUR GREEN METAL RESOURCE



Hot Tip of the Month

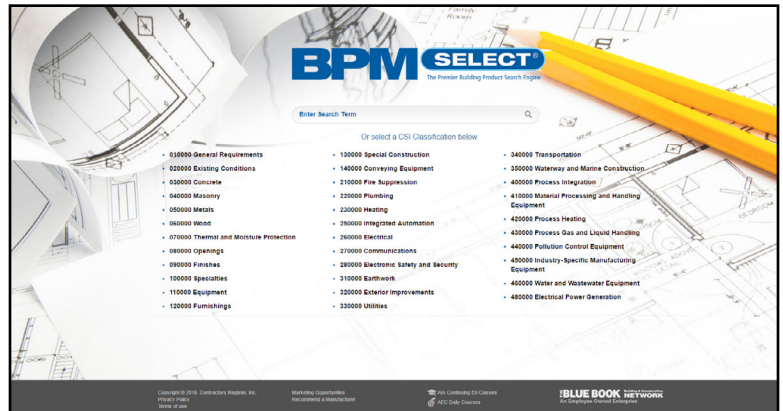
Getting Selective with BPM Select

By: Jeremy Olsen CSI ,CCS, CCCA, AIA. LEED AP

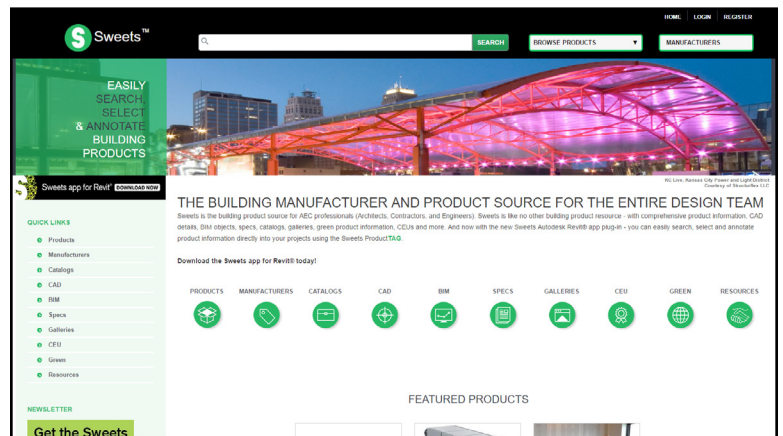
As an architect with a small practice, I often need to find information on building products quickly. I often am disappointed with results of conventional search engines when I'm looking for building product information- too many of the words used in building construction are also used in other settings with completely different meanings (this might be a fun game for chapter meetings), so engines like Google deliver a lot of spurious results you have to filter through before you find what you really need.

Enter [BPM Select](#)- a search engine specifically tailored for building products and materials (hmm, maybe that's what "BPM" stands for...). It is operated by [The Blue Book Network](#), a for-profit company that specializes in a bunch of products like directories of contractors, architects & engineers, projects out for bid, etc.

A user can either browse by category (organized by our familiar CSI Masterformat numbers) or enter a search term and get much more specific and useful search results than from Google. It is obvious that companies must pay to be listed, and higher advertising/ listing fees must result in higher rankings in the search results (which is also how Google and other search engines work, too). A user does not have to be logged in to use the search engine. I keep BPM select bookmarked in my browser and jump to it when I am searching for that company or product whose name has slipped my memory.



I have conducted a few side by side search tests using both Google and BPM select, and I find pretty consistently that I get more useful results out of BPM Select than I do from Google. I still often use both, so that I can account for any bias as a result of marketing/advertising budgets, but all in all, I find BPM Select to be a timesaver. Of course, [Sweets](#) has a comparable competing search engine and product listing, but for some reason, I just prefer the BPM Select.



I suggest during some down time giving them both a try and comparing results to that of Google or your other preferred search engine, so the next time you are under fire to get information fast, you are ready to rock and roll. Let me know how you like to conduct your searches for products- I'm always looking for a better, faster way to get things done.



Parksite

1563 Hubbard Avenue
Batavia, IL 60510

tel (800) 338-3355
ext 200838
cell (630) 788-0969
fax (330) 875-1700

Matthew Reed
Market Development Manager
Sr. Certified DuPont™ Tyvek® Commercial Specialist

mreed@parksite.com

[Sign up to share your hot tip of the month >>>](#)

Perfectly flat floors, delivered.



Faster, safer, greener.

- The superior system for new construction or renovations
- Guaranteed to meet substrate tolerances for all types of floor coverings
- Reduces build times and carrying costs
- Industry leading warranties



There is nothing like it in the industry.
Snap for the video.

www.laticretesupercap.com



David Meyers, 203-376-8113 Dameyers@laticretesupercap.com



SUPERCAP[®]
The Next Generation Slab[®]

Sponsorship and Marketing Sponsorship Opportunities through January 2017

We have many sponsorship and marketing opportunities throughout the year. These opportunities are a great way to increase your company's presence in the Chicago market while showing your support in the Chicago chapter. Sponsorships include tabletops, Young Professional events, social and special events. We have a sponsorship to fit every budget! To start planning or reserve your spot now, we encourage you to reach out to discuss the availabilities and costs of these opportunities.

Mondays, Jan. 9-March 20, 2017: CDT Exam Study Class

- Time and Location: 5:30pm at Norcon, Inc. 661 W Ohio St, Chicago, IL
- Cost \$150 per class
- One sponsor per class, 10 sponsor spots available, you can sponsor more than one class.
- Speaking opportunity at your sponsored class, recognition with company logo and link to website on CDT section of our website and in monthly newsletter and e-mail blasts, one month business card advertisement in our monthly member newsletter

Thursday, January 12, 2017: Event or Bar Sponsor for Young Professional Event

- Location: Jaks Tap, Chicago, 6-9 pm
- Includes complimentary attendance to the event
- Cost: \$200 - Event sponsorship will include presentation, business card listing in following month's member newsletter, sponsorship recognition at bar with logo on sponsor sign, verbal recognition at event and product display area of 11" x 17" at event for brochures, business cards and/or samples.
- Cost: \$100 - Bar sponsorship includes sponsorship recognition at bar with logo on sponsor sign, verbal recognition at event, product display area of 11" x 17" at event for brochures, business cards and/or samples and logo in following month's newsletter recap on event.

Tuesday, January 24, 2017: Tabletop at Chapter Program

- East Bank Club, Chicago, 5-8pm
- Cost: \$125 member/\$175 nonmember + per person event fee for nonmembers
- Tabletop during social time, speaking opportunity to introduce yourself and company during chapter announcements and sponsorship of raffle prize (prize included in tabletop cost)

To reserve your spot or for more details contact:

Beth Winkler at 773-466-4147 or csichicagochapter@gmail.com

For a full list of sponsorship opportunities throughout the year: [Sponsorship and Marketing Opportunities >>](#)

Become a Chapter Partner

Help the Chicago Chapter! Become a Partner and Promote Your Company to Influential CSI Professionals. To support the Chicago chapter and continue the high level of programming and education, consider becoming a platinum, silver or gold partner. Increase your visibility among not only high-level CSI members, but the extended 2,000 design & construction professionals who have elected to receive our communications and view the website.



Thank you to our new chapter partners this month!

Platinum Level - [Parksite](#)

Silver Level - [Norcon](#)

Thank you to [Laticrete SUPERCAP LLC](#) for renewing their Platinum Partnership with CSI Chicago!

Thank you to all the Partners who support the chapter every month! [View current partners >>](#)

For more information and rates on partnerships and other advertising and sponsorship opportunities, contact the chapter at:

Phone: 773-466-4147

E-mail: csichicagochapter@gmail.com

Details and rates: [CSI Chicago Partnership, Sponsorship and Advertising >>>](#)

Marketing Your Events, Job Openings, and Products

In addition to event sponsorships and partnerships, the Chicago chapter has opportunity for you to spread the word on your company and its activities. We can help you promote your events, job opportunities, and new products through our member only newsletter and our subscribers e-mail newsletter. We also have yearly advertisements in our member newsletter so you can connect with our members consistently every month.

We are always happy to work with you on the details of your advertising. For more information and rates on these opportunities, contact the chapter at:

Phone: 773-466-4147

E-mail: csichicagochapter@gmail.com

Details and rates: [CSI Chicago Marketing and Advertising >>>](#)

The Construction Specifier Magazine

The Construction Specifier is the official magazine of CSI. Click the photo to the right to read current industry articles and the latest issue.



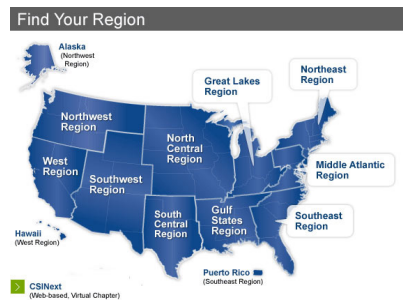
North Central Region Newsletter

Find out what is happening throughout the region by reading the [NCR monthly newsletter](#).



Locate a Chapter or Region

Click on the map to be taken to the chapter locator webpage.



PRODUCTS FOR CONCRETE RESTORATION

WALL PROTECTIVE AND DECORATIVE COATINGS

ADMIXTURES FOR CONCRETE

PRODUCTS FOR STRUCTURAL STRENGTHENING

PRODUCTS FOR LARGE PROJECTS, DAMS, CANALS AND VIADUCTS

PRODUCTS FOR TILE AND STONE

PRODUCTS FOR ROAD MAINTENANCE

PRODUCTS FOR SPORTS FACILITIES

PRODUCTS FOR CEMENTITIOUS AND RESIN FLOORING

PRODUCTS FOR UNDERGROUND CONSTRUCTION

ELASTIC SEALANTS AND ADHESIVES

PRODUCTS FOR SYNTHETIC TURF

PRODUCTS FOR RESILIENT AND CARPET FLOORING

PRODUCTS FOR ACOUSTIC INSULATION

PRODUCTS FOR BELOW-GRADE WATERPROOFING

PRODUCTS FOR WOOD FLOORING

THE WORLD OF MAPEI

TOTAL ARCHITECTURAL SOLUTIONS

As the leading global manufacturer of mortars, grouts and adhesives, MAPEI also offers the full spectrum of chemical products for construction projects – everything from dams, bridges and tunnels to malls, hospitals and condominium towers. We partner with the architectural community by providing a single source for system specifications, technical expertise/consultation and practical online architectural tools.

www.mapei.us/architects
Illustrations by Carlo Stanga

 **MAPEI**
AMERICANS • SOLARIS • CHEMICAL PRODUCTS FOR BUILDING

Industry Events

Contractor College Webinars with IMI

We have a series of upcoming 2-hour long Contractor College webinars intended for BAC-signatory contractors and BAC members. In many cases, the content is also suitable for design professionals.

1/5/17 – Project Closeout

2/16/17 – Masonry Restoration

3/16/17 – Tips to Optimize Structural Masonry

For information and to register for these webinars, [click here](#).



CAC-RCI Annual Meeting and Program

January 18, 2017, 7:00am - 6:00pm

Hamburger University/Hyatt Lodge at McDonald's Campus

Topics include "A Review of Roof Warranties" "Achieving a High Performance Air Barrier System" "Technical Issues in Contemporary Roofing Systems" and "Introduction to WUFI Passive"

[Event Details and printable registration form >>>](#)

[Online registration >>>](#)



CRCA Trade Show & Seminars - January 19 & 20

[Register today!](#) for the 2017 CRCA Trade Show & Seminars "Roofing Week in Chicago: Weighing the Facts!"

Don't miss out on over 135 steep and low slope roofing and waterproofing exhibitors, free seminars and free CEU credits! Seven hours of education available! There is something for everyone at the CRCA Trade Show! Get a list of presenters and topics [here](#)!

The CRCA Roofing Industry Breakfast room is at capacity. Seating now available in an additional room with live feed and breakfast. Space is filling up fast. [Register today!](#)



HOCKEY GAME!! AND BREAST CANCER FUNDRAISER, WITH CSI INDY

Saturday March 18, 2017

Come join us as the Indianapolis Chapter of CSI root on the Mighty Indy Fuel as they take on the Evil Kalamazoo Wings for "Pink in the Rink" night against Breast Cancer. Wear your pink! A portion of the total proceeds go directly to Susan G. Komen Central Indiana to fund breast cancer research and breast health services to women in our community. Special events for our group throughout the game!

6:45 PM Suggested Arrival - SEAT SECTIONS 207/208 (EASY ACCESS TO BAR)

7:35 PM Drop the puck! Game Begins!

Indiana Fairgrounds Colosseum, 1202 East 38th Street

Cost: \$24 per person by end of business day March 3, 2017

[Register Online Now >>>](#)

Leadership Directory

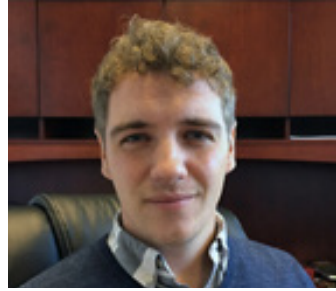
Officers and Directors July 2016 - June 2017



President
[Jeremy Olsen](#)
CSI, CCS, CCCA, AIA, LEED AP



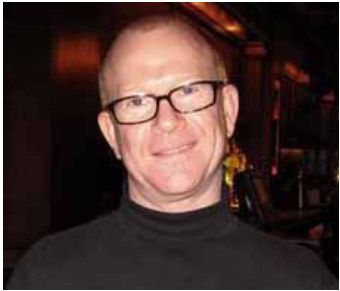
President-elect
[Melissa Gibson](#)
CSI, CCCA, AIA, LEED AP



Vice President 2018
[Peter Grotenhuis](#)
CSI, CDT



Vice President 2017
[Scott Conwell](#)
CSI, CDT, FAIA



Secretary 2017
[Stuart Berger](#)
CSI, CCS, AIA



Treasurer 2017
[Deborah Burkhart](#)
CSI, CCS, AIA, LEED AP



Membership Officer 2017
[Chris Walsh](#)
CSI, CDT, LEED GA



Director 2017
[Tim Blatner](#)
CSI, LEED AP



Director 2017
[Kira Rogatnik](#)
CSI, CDT



Director 2017
[Drew Clausen](#)
CSI



Director 2018
[Andrea Baird](#)
CSI, CCCA, AIA, P.E., LEED AP



Director 2018
[Chris Carpenter](#)
CSI, CCPR



Director 2018
[Robert Moretti](#)
MBA, CSI, CDT



Past President 2017
[Elias Saltz](#)
CSI, CCS, LEED AP



N. Central Region Director
[Matthew Nordloh](#)
CSI, CCPR, LEED GA



Executive Director
[Beth Winkler](#)

Board meetings are typically held 1 hour prior to chapter meetings and open to all members to attend. If you would like to attend, send RSVP to csichicagochapter@gmail.com

Leadership Directory Committee Members

Awards - Chapter	Chair	Jeremy T. Olsen, CSI, CCS, CCCA, AIA, LEED AP	Jeremy@daylightstudioarch.com
Awards - Institute	Chair	Elias Saltz, CSI, CCS, LEED AP	Elias@ArchiTechspec.com
Awards - Regional	Chair	Melissa Gibson, CSI, CCCA, AIA, LEED AP	mgibson@epsteinglobal.com
By-Laws	Chair	Randall A. Chapple, CSI, CCS, AIA, SE	rchapple@gpchicago.com
Certification	Co-Chair	Dan Smith, CSI, CCPR, LEED AP	Dan.R.Smith@saint-gobain.com
Certification	Co-Chair	Larry Nordin, CSI, CCS, AIA	larry.nordin@scb.com
Certification	Committee	Colin O'Donoghue, AIA, LEED AP BD+C	od.colin@gmail.com
Communications	Chair	Stuart Berger, CSI, CCS, AIA	studiob57@comcast.net
Communications	Newsletter Editor	Beth Winkler	csichicagochapter@gmail.com
Communications	NewsL. Committee	Elias Saltz, CSI, CCS, LEED AP	Elias@ArchiTechspec.com
Communications	Website Editor	Beth Winkler	csichicagochapter@gmail.com
Communications	ECommunications	Randall A. Chapple, CSI, CCS, AIA	rchapple@gpchicago.com
Communications	Graphics	Peter W. Grotenhuis, CSI, CDT	peter@sjmallein.com
Communications	Committee	OPEN	
Continuing Education	Coordinator	Joseph A. Stypka, FCSI, CCS, FAIA	jstypka@jahn-us.com
Continuing Education	Committee	Scott Conwell, CSI, CDT, FAIA, LEED AP	sconwell@imiweb.org
Contractor Engagement	Chair	Heather Rice, CSI	hrice@Hpsubfloors.com
Contractor Engagement	Committee	Patrick J. Duffy, Jr., CSI	pduffy@abuildingproducts.com
Contractor Engagement	Committee	Scott Conwell, CSI, CDT, FAIA	sconwell@imiweb.org
Contractor Engagement	Committee	Jennifer R Friedland CSI, CDT, LEED GA	Jennifer.R.Friedland@saint-gobain.com
CSI2eye	Co-Chair	Kurt Moehlmann, CSI, CDT	rpikurt@aol.com
CSI2eye	Co-Chair	Kira Rogatnik, CSI, CDT	krogatnik@metlspan.com
CSI2eye	Committee	Alan Itzkowitz, AIA, FCSI, CCS, CCCA, NCARB, LEED AP	alan.itzkowitz@gmail.com
Finance Committee	Chair	Deborah Burkhart, CSI, CCS, AIA, LEED AP	dabdab@bus.illinois.edu
Finance Committee	Committee	Stuart Berger, CSI, CCS, AIA	studiob57@comcast.net
Historian	Chair	W. Dean Walker, CSI, CCS, AIA	deanspecs@gmail.com
Historian	Committee	Elias Saltz, CSI, CCS, LEED AP	Elias@ArchiTechspec.com
Membership	Chair	Chris Walsh, CSI, CDT, LEED GA	cwalsh@inprocorp.com
Membership	Committee	Randall A. Chapple, CSI, CCS, AIA, SE	rchapple@gpchicago.com
Membership	Committee	David O'Bryan Jr., CSI, CDT	dobryan@rustoleum.com
Membership	Committee	Missy Ruminski, CSI-EP, Affiliate AIA Chicago	Missy@tuschalleng.com
Membership	Committee	Robert Moretti, MBA, CSI, CDT	rmoretti@tremcoinc.com
Nominating	Chair	Melissa Gibson, CSI, CCCA, AIA, LEED AP	mgibson@epsteinglobal.com
Nominating	Committee	Elias Saltz, CSI, CCS, LEED AP	Elias@ArchiTechspec.com
Nominating	Committee	Jeremy T. Olsen, CSI, CCS, CCCA, AIA, LEED AP	Jeremy@daylightstudioarch.com
Nominating	Committee	Kurt Moehlmann, CSI, CDT	rpikurt@aol.com
Partners & Sponsorship	Chair	Drew Clausen, CSI	drew.clausen@owenscorning.com
Partners & Sponsorship	Committee	Scott Conwell, CSI, CDT, FAIA	sconwell@imiweb.org
Partners & Sponsorship	Committee	Peter W. Grotenhuis, CSI, CDT	peter@sjmallein.com
Programs	Chair	Timothy Blatner, CSI, LEED AP	tblatner@fitzgeraldassociates.net
Programs	Committee	William Cohen, CSI	bcohen@epicmetals.com
Programs	Committee	Robert Moretti, MBA, CSI, CDT	rmoretti@tremcoinc.com

Committee members continued on the next page...

Leadership Directory Committee Members (cont.)

Programs	Committee	Andrea Baird, CSI, CCCA, AIA, P.E., LEED AP	albaird@rrj.com
Roundtable - Industry	Chair	Scott Conwell, CSI, CDT, FAIA	sconwell@imiweb.org
Roundtable - Industry	Committee	Matthew Nordloh, CSI, CCPR	mattn@integratingproducts.com
Roundtable - Industry	Committee	Robert Moretti, CSI, CDT	rmoretti@tremcoinc.com
Roundtable - Industry	Committee	Chris Carpenter, CSI, CCPR	ccarpenter@pella.com
Roundtable - Meet the Rep	Chair	John Birazzi, CSI, CDT	jbirazzi@kleinandhoffman.com
Roundtable - Meet the Rep	Committee	Pat Ruban, CSI	patruban10@yahoo.com
Roundtable - Meet the Rep	Committee	OPEN	
Roundtable - Specifier	Chair	Melissa Marie Gibson, CSI, CCCA, AIA, LEED AP	mgibson@epsteinglobal.com
Roundtable - Specifier	Committee	James Cross, CSI, CCS, AIA	j.cross@studiogc.com
Roundtable - Specifier	Committee	Randall A. Chapple, CSI, CCS, AIA	rchapple@gpchicago.com
Roundtable - Specifier	Committee	Larry Nordin, CSI, CCS, AIA	larry.nordin@scb.com
Roundtable - Summer Series	Chair	Jeremy T. Olsen, CSI, CCS, CCCA, AIA, LEED AP	Jeremy@daylightstudioarch.com
Roundtable - Technical	Chair	Elias Saltz, CSI, CCS, LEED AP	Elias@ArchiTechspec.com
Roundtable - Technical	Committee	Jeremy T. Olsen, CSI, CCS, CCCA, AIA, LEED AP	Jeremy@daylightstudioarch.com
Roundtable - Technical	Committee	Elaine Fitzgerald, CSI, CCS	elainefitzgerald@comcast.net
Roundtable - Technical	Committee	Andrea Baird, CSI, CCCA, AIA, P.E., LEED AP	albaird@rrj.com
Roundtable - Technical	Committee	Robert Moretti, CSI, CDT	rmoretti@tremcoinc.com
Social	Chair	Kristin Henriksen, CSI, CDT	k_henriksen14@yahoo.com
Social	Committee	Kira Rogatnik, CSI, CDT	krogatnik@metlspan.com
Social	Committee	Taylor Neill, CSI	taylorneill@marvin.com
Social - Young Professionals	Committee	Rebecca Greenberg, CSI, CDT	rgreenberg@esadesign.com
Social - Young Professionals	Committee	Noi Phonexayphova, CSI, CDT	sphonexayphova@gmail.com
Social - Young Professionals	Committee	Charles Arko, CSI, CDT	charlesarko@hotmail.com
Social Media	Chair	Holly Hirsch, CSI	Holly.Hirsch@boral.com
Social Media	Committee	Thad Goodman, CSI, CDT	thadg@nationalgypsum.com
Social Media	Committee	Wesley Sherrer, CSI	wesley.sherrer@momentive.com
Social Media	Committee	OPEN	
Student Outreach	Chair	Peter W. Grotenhuis, CSI, CDT	peter@sjmallein.com
Student Outreach	Committee	Scott Conwell, CSI, CDT, FAIA	sconwell@imiweb.org
Student Outreach	Committee	Jeremy T. Olsen, CSI, CCS, CCCA, AIA, LEED AP	Jeremy@daylightstudioarch.com
Technical	Chair	Randall A. Chapple, CSI, CCS, AIA	rchapple@gpchicago.com



Wesley Sherrer, CSI
 Midwest Region Manager
wesley.sherrer@momentive.com
 + 1 614 392 1015
 + 1 614 314 9217 M
 Momentive Performance Materials Inc.
 6716 Damson Place
 Westerville, OH 43082
www.ge.com/silicones



Licensed Products



Johnathan Meany, CSI
 National Architectural
 Representative
jmeany@behrpaint.com
 (609) 453-0720
behr.com/architect

Let's Fix Construction: Pitch Your Fix at #CONSTRUCT

By: Eric D. Lussier

From the first post in August 2016, one of the core beliefs of 'Let's Fix Construction' has been the open sharing of knowledge. Whether acquired in a classroom setting, from a trusted mentor, or learned directly in the field, what good is having facts, information and skills if it is not freely and willingly shared with others?

Year after year, there is one place in construction where all members of the project team: specifiers, architects, engineers, contractors, facility managers, product representatives, manufacturers, owners and others converge to acquire and share industry knowledge: CONSTRUCT. The [Construction Specifications Institute](#) annual meeting and affiliated tradeshow hosts dozens of project team instructors who share their acquired knowledge to attendees who are there to learn and absorb new information.

Now is your chance to share your knowledge and turn what you've learned into a unique presentation that will help improve the construction community. Consider submitting a **Call for Presentations** proposal for [CONSTRUCT 2017](#), which is taking place on September 13-16 at the Rhode Island Convention Center in Providence, RI.

[Read Complete Blog Post and other Let's Fix Construction posts from December >>>](#)

The Right Materials



The Right Way

Constructed by Experienced
Union Craftworkers and
Contractors

For answers to your masonry
questions, call 1-800-IMI-0988



Scott Conwell, FAIA, CDT, LEED AP BD+C
2140 W. Corporate Drive, Addison, IL 60101
Phone: (630) 396-3144 EMail: sconwell@imiweb.org
www.imiweb.org

NEED SUBFLOOR SOLUTIONS? WE'VE GOT YOU COVERED.

- PRIMERS AND MOISTURE MITIGATION SYSTEMS
- REPAIR, PATCHING, AND SMOOTHING COMPOUNDS
- FLOOR LEVELING COMPOUNDS AND UNDERLAYMENTS
- WATERPROOFING MATERIALS
- ADHESIVES



The best floors are based on subfloors from



HPS NORTH AMERICA



Toll Free: 855.391.2649 www.hpsubfloors.com

The Closeout 203 N LASALLE

**Submitted by: Elias Saltz, CSI, CCS, LEED AP
Eckenhoff Saunders Architects**

First and second floor interior renovation

Location: Chicago, Illinois

Size: 32,800 sf

203 North LaSalle, constructed in 1986, underwent a rebranding under the leadership of Sumitomo Corporation of Americas. Eckenhoff Saunders Architects (ESA) is the architect of record and assisted with the design of the ground floor lobby and atrium renovation, the addition of a Clark Street entrance canopy, and new Clark street entrance. ESA also designed the second floor tenant amenity spaces, including a conference center, tenant lounge, fitness center, and public toilets. Our interiors department worked with the client to select and purchase new furniture and equipment for all of the remodeled spaces. ESA assisted in the production of marketing materials for both the first and second floor renovated spaces.

All photographs were taken by Mariusz Mizera Photography.



[Sign up to showcase your project in *The Closeout* >>>](#)